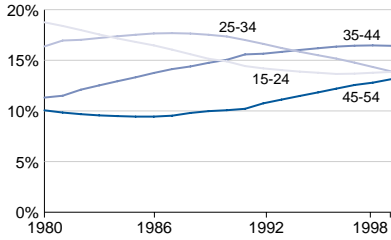


Overview

Population Percentage by Age Group

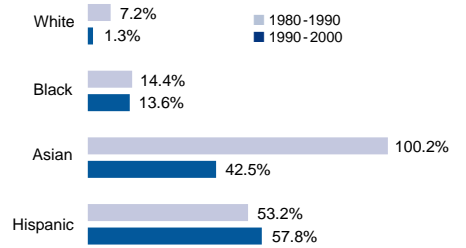


Ethnic/Racial Profile of US Population
(in millions)

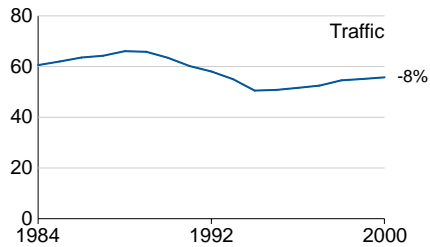
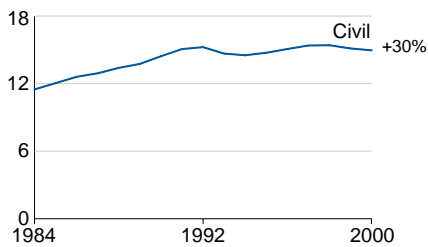
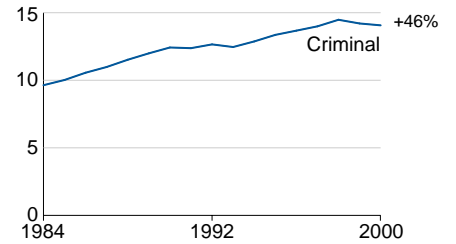
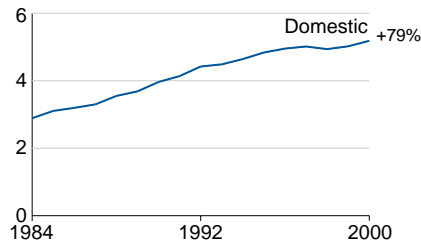
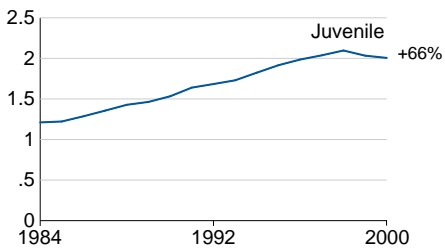
	1980	1990	2000
White	194.7	208.7	211.5
Black	26.7	30.5	34.7
Hispanic	14.6	22.4	35.3
Asian/Hawaiian/Pacific	3.7	7.5	10.6
American Indian/ Alaskan Native	1.4	2.1	2.5

* Persons can be counted in more than one category because race and ethnicity are not mutually exclusive

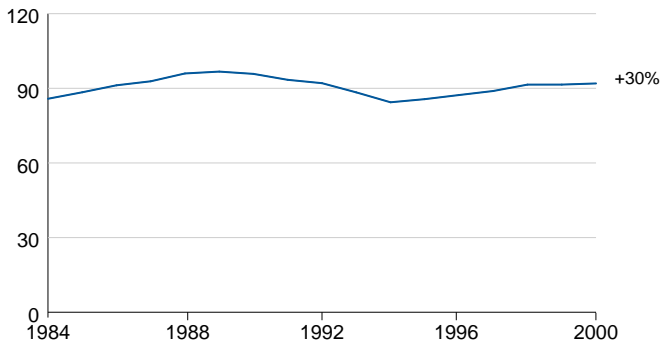
Ethnic /Racial Growth Rate



Cases Filed in State Courts, 1984-2000 (in millions)



Total State Court Caseloads, 1984-2000 (in millions)



Caseload Growth Rates of U.S. District and State General Jurisdiction Courts, 1984-2000

