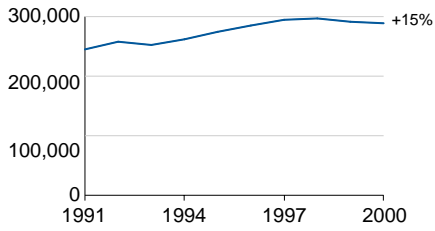
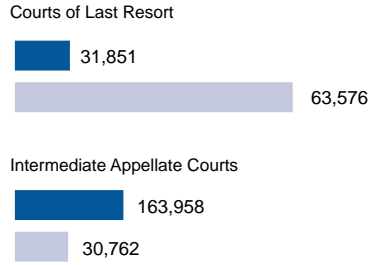


Appellate

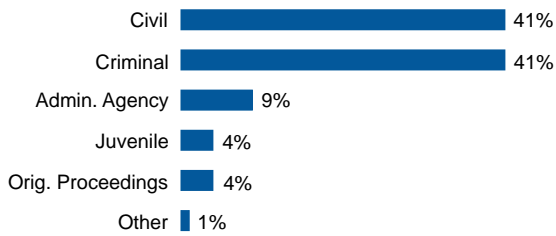
Total Appellate Court Filings, 1991 - 2000



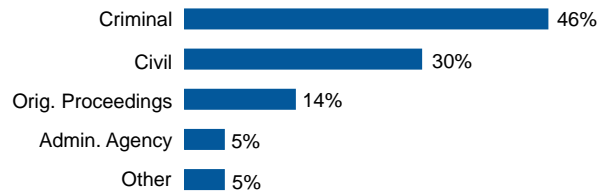
Total Appellate Caseloads, 2000



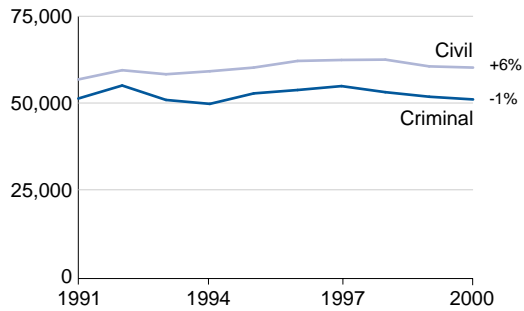
Composition of Discretionary Petitions in 31 COLRs, 2000



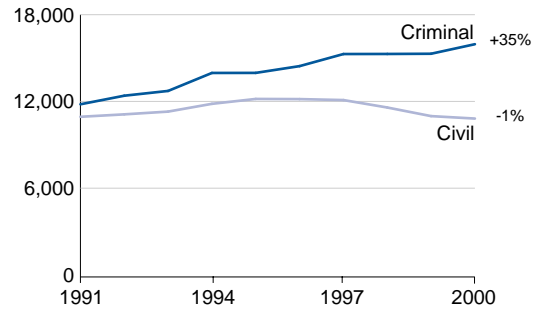
Composition of Mandatory Appeals in 23 IACs, 2000



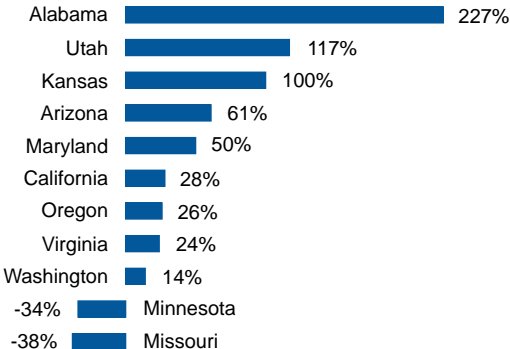
Mandatory Civil and Criminal Appeals in 32 Intermediate Appellate Courts, 1991-2000



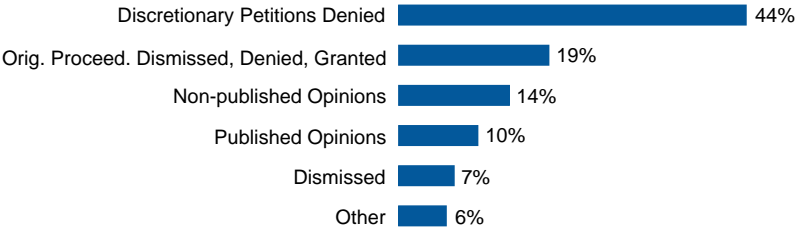
Discretionary Civil and Criminal Petitions in 15 Courts of Last Resort, 1991-2000



Percent Change in Original Proceedings in 11 Intermediate Appellate Courts, 1991 vs. 2000



Manor of Disposition in 46 Courts of Last Resort, 2000



Federal Civil Rights and Habeas Corpus Filings by Month, April 1992 - July 2001

